

PS3DOC

Installation and Operation Manual

PlayStation 3 Docking Station



TECHNICAL SUPPORT
678-867-6717, or
www.FlightDisplay.com

Flight Display Systems

Enhancing the Flight Experience

PS3DOC

PS3 Docking Station

© 2008 Flight Display Systems. All Rights Reserved.

Flight Display Systems

1765 Grassland Pkwy

Alpharetta, GA 30004

678-867-6717 Phone

678-867-6742 Fax

sales@flightdisplay.com

www.flightdisplay.com

For the most current copy of all product manuals, please visit our website at
www.flightdisplay.com

Table of Contents

General Information

Front View	2
Additional Information	2
Specifications	3
Docking Instructions	3
Power Requirements	3
Installation Considerations	4
High Density DB-15.....	4
Wiring Diagram.....	4

Technical Support

Instructions for Continued Airworthiness

Warranty Information

Assembly Drawings.....	7
------------------------	---

Index

Log of Revisions	10
------------------------	----

General Information

The PS3DOC is a rugged, slim PS3 Docking Station which offers two elements of In-Flight Entertainment for most aircraft. The unit has been designed specifically to connect with the Sony PlayStation 3 (Not included). The PS3DOC is a great solution to bring Hi-Def into the aircraft via PlayStation 3 Blu-ray DVD. Also, gaming can now be a fun part of the In-Flight Entertainment system.

Front View



See front cover for image of PS3DOC with PlayStation 3

Additional Information

The unit is designed for vertical mounting to allow for installation in the narrowest areas. For a true Hi-Def experience, the PS3DOC can be interfaced with Flight Display System's HD LCDs which are available in 17", 20", 26", 32", and 42" sizes. All of these HD LCDs come standard with 2 HDMI inputs. The DAPSHDMI-1 is a splitter with 2 inputs and 8 outputs that allows for extending and distributing the HDMI signal.

Specifications

Dimensions - Empty	13.32"(W) x 10.1"(H) x 4.43"(D) <i>excludes handle</i>
Dimensions - Docked	14.66"(W) x 13.1"(H) x 4.36"(D)
Power Consumption (Dock Only)	115 VAC
Materials	Aluminum
Weight	6 lbs 2.8 oz
Connections	1 x HDMI (Video) 1 x DB15 (Composite Video / Audio) 1 x 3-Prong (115VAC Power)

Docking Instructions

1. Pull the handle on the unit upwards to extend the latch.
2. Position the PlayStation 3 so that its connectors are facing the PS3DOC.
3. Pull the HDMI and Composite/Audio pigtails from the pocket and connect to the appropriate ports on the PlayStation 3.
4. Tuck the excess pigtail back into the pocket.
5. Slide the PlayStation 3 back against the PS3DOC, using the power connector as a guide.
6. Lock the unit in place by pressing the handle wand down.

Power Requirements

The PS3DOC utilizes a 3-prong power cable to route power to the PlayStation 3. It uses an A/C fan to assist with cooling. We recommend referring to Sony for the latest information regarding power requirements.

At the time of the original issue of this manual, Sony recommended a 120V power supply capable of handling 380 watts of power. In an aircraft, this will require an inverter (not included).

It is recommended that the power switch on the PS3DOC be in the off position when docking the PlayStation 3. After docking, the switch should be moved to the on position to supply power to the PlayStation 3.

Installation Considerations

The capabilities of the PlayStation 3 result in a steady output of warm exhaust. The PS3DOC is designed with a built-in fan to help dissipate this heat. If the PS3 is in an enclosed area a fan is required to circulate ambient air around the PS3.

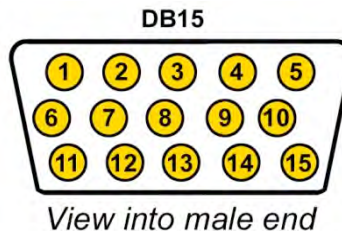
High Density DB-15

Part numbers for DB-15 connectors, manufactured by Tyco or Amp:

High density, D-sub, 15 contact receptacle (female)
HD15F pins

P/N 748565-1
P/N M39029/57-354

Wiring Diagram



Pin Number	Description
1	Audio – Left – Signal
2	Audio – Left – Ground
3	N/C
4	Audio – Right – Signal
5	Audio – Right – Ground
6	N/C
7	Composite Video – Signal
8	Composite Video – Ground
9	N/C
10	N/C
11	N/C
12	N/C
13	N/C
14	N/C
15	N/C

Technical Support

Should you have any questions concerning this product or other Flight Display Systems products, please contact our Product Support representatives at (678) 867-6717.

Flight Display Systems

1765 Grassland Parkway

Alpharetta, GA 30004

Phone: 678-867-6717

Fax: 678-867-6742

Email: sales@flightdisplay.com

For further product information, technical data and sample wiring diagrams, please click on the **Dealers** section of our web site at www.flightdisplay.com

Instructions for Continued Airworthiness

The PS3DOC is designed not to require regular general maintenance.

Warranty Information

Flight Display Systems warrants the PS3DOC against material or manufacturing defects for a *two-year period (effective 1/1/2009 on all equipment shipped with 2009 pricing). Warranty begins on date of installation. *The warranty registration card must be returned upon installation in order to validate the two-year warranty. Any warranty registration not returned during this time period will default to the date of purchase as the warranty start date.

Please call our Technical Support at 678-867-6717 to obtain an RMA number. Flight Display Systems will, upon receipt of the failed hardware, remanufacture or replace the unit at our discretion.

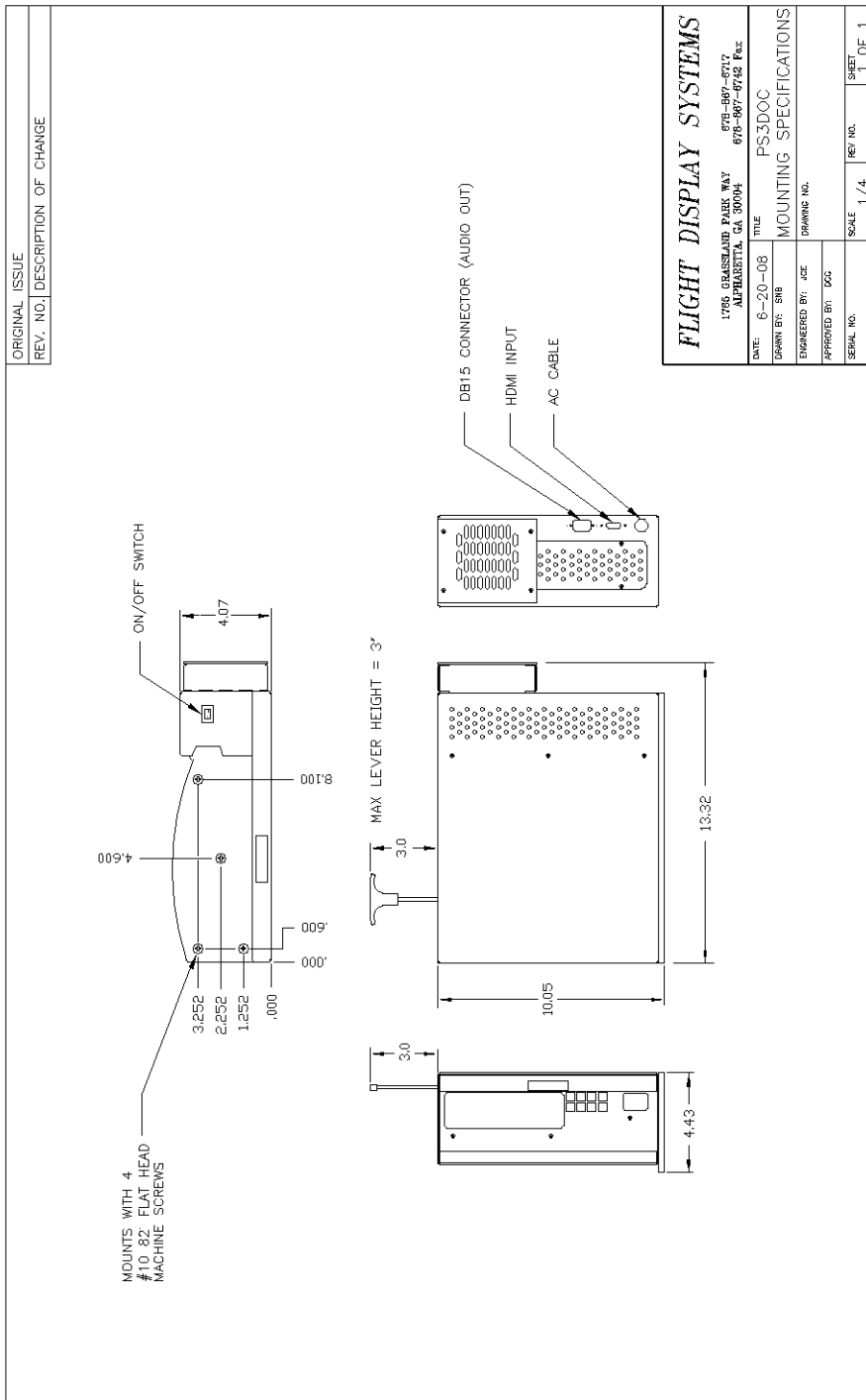
Flight Display Systems will pay Ground Shipping charges for warranted items. Charges for express shipment will be the responsibility of the sender.

This warranty is not transferable. Any implied warranties expire at the expiration date of this warranty. We shall not be liable for incidental or consequential damages.

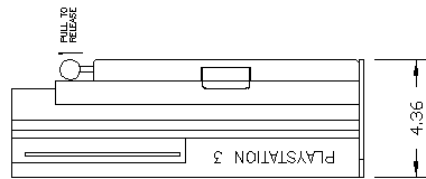
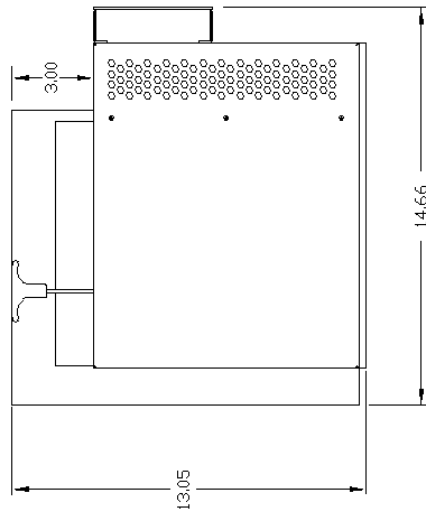
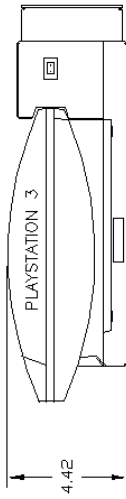
This warranty does not cover a defect or failure that has resulted from improper or unreasonable installation, use or maintenance, as determined by Flight Display Systems. This warranty is void if there is any attempt to disassemble or open this product without factory authorization.

Any labour charges associated with the removal of product or related troubleshooting by a firm other than Flight Display Systems or its designee will not be covered.

Assembly Drawings



ORIGINAL ISSUE	
REV. NO.	DESCRIPTION OF CHANGE



FLIGHT DISPLAY SYSTEMS
 1765 GRASSLAND PARK WAY 678-867-6717
 ALPHARETTA, GA 30004 678-867-6742 Fax

DATE	6-20-08	TITLE	PS3DOC W/ PLAYSTATION3 MOUNTING SPECIFICATIONS
DRAWN BY:	SHB	ENGINEERED BY:	JCE
APPROVED BY:	DCS	DRAWING NO.	

SERIAL NO.	SCALE	REV. NO.	SHEET
	1/4		1 OF 1

Index

Continued Airworthiness 5
Support..... 4

Warranty..... 5
Wiring Diagram..... 3

Log of Revisions

Rev	Date	Page	Description
A	05/30/2008	---	---
B	06/10/2008	3	Added Installation Considerations
C	07/02/2008	2,3 7	Removed VDC fan references, updated specs. Updated drawings.
D	01/29/2009	3,6	Updated specifications, warranty info