

DAPSHDMI-1

Installation and Operation Manual

HDMI Splitter



TECHNICAL SUPPORT
678-867-6717, or
www.FlightDisplay.com

Flight Display Systems
Enhancing the Flight Experience

DAPSHDMI-1

HDMI Splitter

© 2008 Flight Display Systems. All Rights Reserved.

Flight Display Systems

1765 Grassland Parkway

Alpharetta, GA 30004

678-867-6717 Phone

678-867-6742 Fax

sales@flightdisplay.com

www.flightdisplay.com

For the most current copy of all product manuals, please visit our website at

www.flightdisplay.com

Table of Contents

General Information

Front View	1
Additional Information	1

Specifications	2
-----------------------------	----------

Installation Instructions

Power.....	2
HDMI Cable and Connectors	3

Video Wiring Suggestions.....	5
--------------------------------------	----------

Power and Ground Wiring	5
-------------------------------	---

Pinout for DB-9.....	6
-----------------------------	----------

Wiring Diagram.....	6
---------------------	---

Technical Support

Instructions for Continued Airworthiness

Warranty Information

Assembly Drawing	9
------------------------	---

Index

Log of Revisions	12
------------------------	----

General Information

The DAPSHDMI-1 is a HDMI Splitter which takes a 2 HDMI sources, and splits and amplifies each to 4 outputs.

Front View



Additional Information

The DAPSHDMI-1 is a splitter that is designed to interface with products that use HDMI (High-Definition Multimedia Interface) video output. Products that can interface with the splitter include Blu-Ray DVD players or Playstation 3. The DAPSHDMI-1 can extend the distance between the video source and the monitor.

Additionally, the DAPSHDMI-1 is fully compliant with HDCP specifications, ensuring that High-Definition content is viewable at its native resolution.

The DAPSHDMI-1 is made of all metal components. DO-160E testing has been completed and is available upon request.

Specifications

Video Input	2 x HDMI
Video Output	4 Channels per Input
Maximum Resolution	1080p
Dimensions	9.5" (W) x 1.6" (H) x 5.15" (D)
Weight	1 lbs 9 oz
Power	28VDC @ 2.0 Amps
Mounting Points	8 Points on Flange
Materials	Aluminum
DO-160	Section 21 Category B

Installation Instructions

All cabin entertainment equipment, such as the DAPSHDMI-1, should be installed on a non-essential bus and have a dedicated circuit breaker. It is a requirement that a switch be installed so that the pilot can de-energize the system should it become necessary.

There are four mounting slots located on the side of the DAPSHDMI-1 for horizontal mounting and four slots on the end for vertical mounting. This unit can be mounted in any orientation. Care should be given to make sure the DB & HDMI connectors are firmly seated in the VGA inputs and outputs and that the aircraft wire bundle will not shift and pull the plugs away from the DAPSHDMI-1.

The unit will come on automatically upon applying power. Install HDMI cables in the numerical order as indicated on the DAPSHDMI-1 labeling.

Power

This is a **28VDC** device that requires 2 Amps of power to operate.

HDMI Cable and Connectors

We recommend the use of specialized cable from ECS which is designed to deliver HDMI content in an aircraft installation. The cable is ordered per part number: 600-19786-XXX, where XXX is the length in inches. ECS will pre-terminate the cables. They can be contacted at 800-327-9473 or 414-421-5300.

In order to prevent the HDMI cables from being disconnected when installed, it is possible to secure them to the unit using cable tie wraps. Insert $\frac{1}{4}$ " x $\frac{7}{8}$ " hex standoffs (p/n 93505A435) into the appropriate holes where necessary. Screw one or two tie wraps (p/n 7295K1) to each jackscrew with 4-40x $\frac{5}{8}$ " pan head screws (p/n 91771A112). Tie the tie wraps around the HDMI cables so that the connectors are secure. **Note: (5) Standoffs, (5) screws, and (15) cable tie wraps are included with each unit.**





Video Wiring Suggestions

All shields should be grounded to the connector at the source, and floating at the display.

Avoid routing video wiring parallel to:

- AC wiring
- Strobe wiring
- DC motor supply cables
- Inverter cabling
- Or any other potential noise source.

Power and Ground Wiring

22 AWG wire is recommended for Power and Ground applications.

Pinout for DB-9

Part Numbers for DB-9 connector, manufactured by Tyco or Amp.

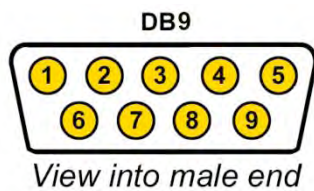
D-sub, 9 contact receptacle (female)

P/N 205203-1

9F pins

P/N M39029/63-368

Wiring Diagram



Pin Number	Description
1	28VDC In - Power
2	28VDC In - Ground
3	N/C
4	28VDC In - Power
5	28VDC In - Ground
6	N/C
7	N/C
8	N/C
9	N/C

Technical Support

Should you have any questions concerning this product or other Flight Display Systems products, please contact our Product Support representatives at (678) 867-6717.

Flight Display Systems

1765 Grassland Parkway

Alpharetta, GA 30004

Phone: 678-867-6717

Fax: 678-867-6742

Email: sales@flightdisplay.com

For further product information, technical data and sample wiring diagrams, please click on the **Dealers** section of our web site at www.flightdisplay.com

Instructions for Continued Airworthiness

The DAPSHDMI-1 is designed not to require regular general maintenance.

Warranty Information

Flight Display Systems warrants the DAPSHDMI-1 against material or manufacturing defects for a *two-year period (effective 1/1/2009 on all equipment shipped with 2009 pricing). Warranty begins on date of installation. *The warranty registration card must be returned upon installation in order to validate the two-year warranty. Any warranty registration not returned during this time period will default to the date of purchase as the warranty start date.

If product support is required, please call our Technical Support team at 678-867-6717 to obtain assistance. If the return of the unit to the factory is required, an RMA number will be issued at that time. Flight Display Systems will, upon receipt of the failed hardware, remanufacture or replace the unit at our discretion.

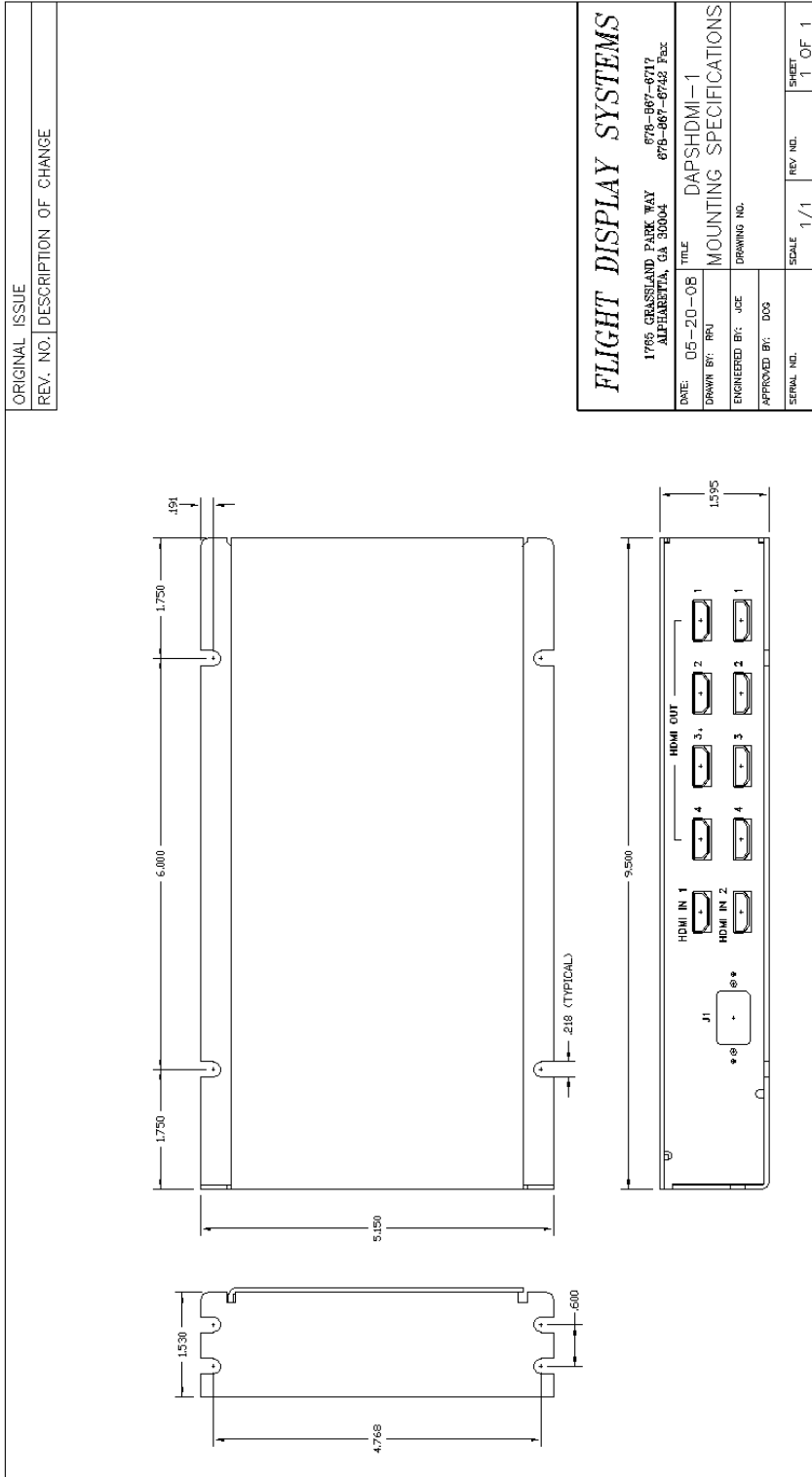
Flight Display Systems will pay Ground Shipping charges for warranted items. Charges for express shipment will be the responsibility of the sender.

This warranty is not transferable. Any implied warranties expire at the expiration date of this warranty. We shall not be liable for incidental or consequential damages.

This warranty does not cover a defect or failure that has resulted from improper or unreasonable installation, use or maintenance, as determined by Flight Display Systems. This warranty is void if there is any attempt to disassemble or open this product without factory authorization.

Any labor charges associated with the removal of product or related troubleshooting by a firm other than Flight Display Systems or its designee will not be covered.

Assembly Drawing



Index

Continued Airworthiness	6	Warranty	7
DB-15.....	5	Wiring.....	4
Shields.....	4	Diagram.....	5
Support	6	Power and Ground	4

Log of Revisions

Rev	Date	Page	Description
A	05/21/2008	---	---
B	06/16/2008	1 2 5 6	Removed reference to power out, corrected "DO-160E" Corrected "DO-160E", LED, HDMI, & length references. Corrected pinout Removed "troubleshooting" section
C	01/29/2009	2,8	Updated specifications, warranty info